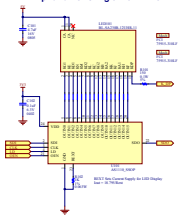
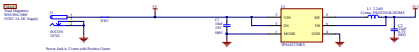


### Alphanumeric Digit with Driver

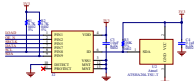


### 5V Input and 3V3 Power Supply

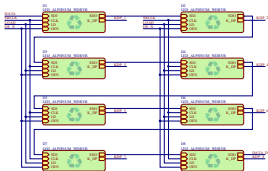


### Imp Slot and ID Chip

Diags are provided from 1 - 10 on Expansion Card and 11-12 on External Break Board to Reduce Layout Design/Assembly Steps

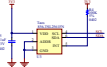


### LED Drivers

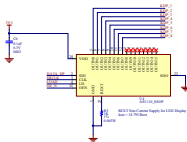


### Digital Ambient Light Sensor

8-Bit Address (ADDR Low)



### Decimal Point Driver



Imp Slot  
External Break Board

Imp Slot - Imp Slot - LED Digit Controller

Rev	1.0	Rev	1.0
Date	10/10/10	Date	10/10/10
Rev	1.0	Rev	1.0
Date	10/10/10	Date	10/10/10

Rev 1.0  
Date 10/10/10



electric imp

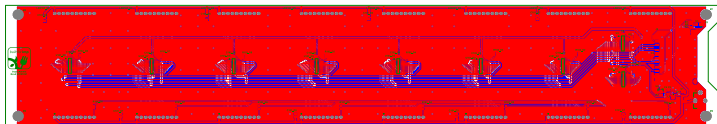




Table with 13 columns: Item, Quantity, Location, Part Number, Manufacturer, Manufacturer Part Number 1, Manufacturer Part Number 2, Part 1, Part 1 Location, Part Number 3, Part Number 4, Part Number 5, Part Number 6, Part Number 7. The table contains multiple rows of component data for various electronic parts.